



# Barcelona

4 DAYS, 3 NIGHTS – FROM **£559**<sub>PP</sub>



MAKE AN  
ENQUIRY

# Art, Science, Culture & Entertainment

In the Catalan capital of Barcelona, the rich history of the city is complemented by contemporary life. With stunning architectural works by Gaudi and a host of art and graphics by influential twentieth century artists (such as Picasso, Miro and Dali) Barcelona exudes art and design at every turn.

It is also Spain's major Mediterranean port and commercial centre. For students of business studies there is a range of excursions to complement their learning. Visits to the Olympic Stadium, the Port of Barcelona, El Punt Newspaper and the Stock exchange are but a few of the options.

In addition, there are beautiful beaches, dozens of parks and fantastic shopping. Our experienced travel advisors will be delighted to provide expert advice and guidance during the organisation of your tour ensuring that your trip is tailored to your groups needs.

[www.barcelonaturisme.com](http://www.barcelonaturisme.com)



ibt



MAKE AN  
ENQUIRY

# Day 1

## Morning

Flight from the UK to Spain

## Afternoon

Arrive Barcelona

Coach will transfer group to hotel for check in

### Visit to Montjuic area & Poble Espanyol \*

Free time to explore Montjuic. Take the teleferic (cable car) up to the castle, wander around the Olympic Ring, call by an art museum or two, and finish with a performance at the Magic Fountain. Montjuic offers great views, gorgeous gardens & the Olympic Ring from Olympic Games in 1992.

[/ READ MORE ➞](#)

Because of its location, history, personality and everything within it, Poble Espanyol is a special and one-of-a-kind spot in Barcelona. It has everything from architecture, handicrafts, modern art, cultural and leisure activities.

[/ READ MORE ➞](#)

*\* Entry fees are not included and any paid activities are to be arranged and paid direct by the group.*



ibt



MAKE AN  
ENQUIRY







# Day 2

## Morning

Breakfast in the hotel

### Visit to the Picasso Museum

The Museu Picasso houses one of the most extensive collections of artworks by the 20th-century Spanish artist Pablo Picasso. With 4,251 works exhibited by the painter, the museum has one of the most complete permanent collections of works.

[/ READ MORE](#) ➞

## Afternoon

### External viewing of the Basilica de la Sagrada Familia and time spent exploring Las Ramblas & Gothic Quarter

The basilica is a major symbol of the city of Barcelona throughout the world and is the most famous monument by Antoni Gaudí. The architect consecrated sixteen years of his life to his construction, living as a recluse in the building before having an accident and dying in 1926 without his project being completed.

[/ READ MORE](#) ➞



MAKE AN  
ENQUIRY



# Day 2

## Afternoon (cont)

La Rambla is a street in central Barcelona, popular with tourists and locals alike. A tree-lined pedestrian mall, it stretches for 1.2 km connecting Plaça de Catalunya in the centre with the Christopher Columbus Monument at Port Vell. La Rambla forms the boundary between the quarters of Barri Gòtic, to the east, and El Raval, to the west. From the eateries to the flower vendors, to the shops it is a must see in Barcelona.

[/ READ MORE ➞](#)

The charming Gothic Quarter offers a mix of old and new that brings people from all over the world. Artisans sell leather and jewellery near the Cathedral of Barcelona, while flower stalls and street-food vendors line busy avenue La Rambla.

The Plaça del Pi, named after the adjacent Gothic church, hosts a weekend art market.

[/ READ MORE ➞](#)



ibt



MAKE AN  
ENQUIRY



# Day 3

## Morning

Breakfast in the hotel

## Full day

### **Coach transfer from hotel to PortAventura**

Spend the day discovering the six worlds of one of Europe's most iconic theme parks. Experience the fun and excitement of over 42 thrilling rides at this incredible resort!

[/ READ MORE ➔](#)

Coach will return group to the hotel.



MAKE AN  
ENQUIRY





# A WORLD OF UNIQUE EXPERIENCES

ONLY 1 HOUR FROM  
BARCELONA

[www.portaventuraworld.com](http://www.portaventuraworld.com)



MAKE AN  
ENQUIRY



# Day 4

## Morning

Breakfast in the hotel

### Visit to Parc Güell

Park Güell is where Gaudí turned his hand to landscape gardening. In 1922 the city bought the estate for use as a public park. The spired house over to the right is the Casa Museu Gaudí, where Gaudí lived for most of his last 20 years.

[/ READ MORE](#) ➔

## Afternoon

**Coach transfer to the airport**

Flights from Spain to the UK



MAKE AN  
ENQUIRY



## Urbany Hostel

Avinguda Meridiana, 97, 08026, Barcelona, Spain

tel. +34 942 818 140 web. [www.urbanyhostels.com](http://www.urbanyhostels.com)



### HOTEL INFORMATION

The Urbany Hostel Barcelona is located in one of the newest and more modern parts of Barcelona, where you can experience a real taste of Catalan life. The hostel is a place where you can have a relaxing shower, share your travel stories, read your favourite book and rest after sightseeing.

### LOCATION

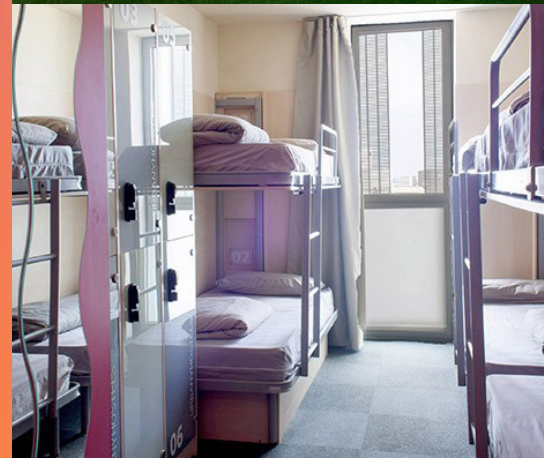
Just a few metro stops from Las Ramblas and connected to the airport via direct train line

### FEATURES

Gym, swimming pool, internet access and 24-hour reception

### BEDROOMS

Bedrooms and dorms with bathroom, keycard locker and free Wi-Fi



MAKE AN  
ENQUIRY





## Generator Hostel

Carrer de Còrsega, 373, 08037 Barcelona, Spain

tel. +34 932 200 377 web. [www.staygenerator.com](http://www.staygenerator.com)



### HOTEL INFORMATION

Generator Barcelona is located in the buzzing district of Gràcia. The hostel is just a short walk from Gaudi's iconic Casa Batlló and Casa Mila. The interiors showcase a mix of styles and include an oversized wooden birdcage, a winding staircase and a mezzanine chill-out lounge. The décor in each of the hostel rooms is always easy on the eye; they're fully equipped with all the modern touches you'd expect too.

### LOCATION

Centre of Barcelona, 20 minutes' walk to Sagrada Familia or Plaza de Catalunya

### FEATURES

Free WiFi, chill-out lounge, interior patio, luggage storage, meeting rooms

### BEDROOMS

From 2 to 8 bed dorms, all ensuite, individual lockers, lights and power-points, air conditioning



MAKE AN  
ENQUIRY





Package price is based on a minimum of 40 full paying passengers plus 5 staff free of charge departing on Monday 4th November 2024 from a main UK airport. Regional airport departures may be available depending on routes and availability. Price also includes return airport transfers in Spain and a dedicated return transfer to PortAventura.



# Book now

## IBT Travel Ltd

Cairn House, 15 Skye Road, Prestwick KA9 2TA, Scotland  
info@ibt-travel.com | www.ibt-travel.com | tel: +44 (0)1292 477 771



## Essential Travel Advice

The Foreign, Commonwealth & Development Office issues essential travel advice on destinations, which includes information on passports, visas, health, safety and security and more:

<https://www.gov.uk/government/organisations/foreign-commonwealth-development-office>



MAKE AN  
ENQUIRY